

the star.com

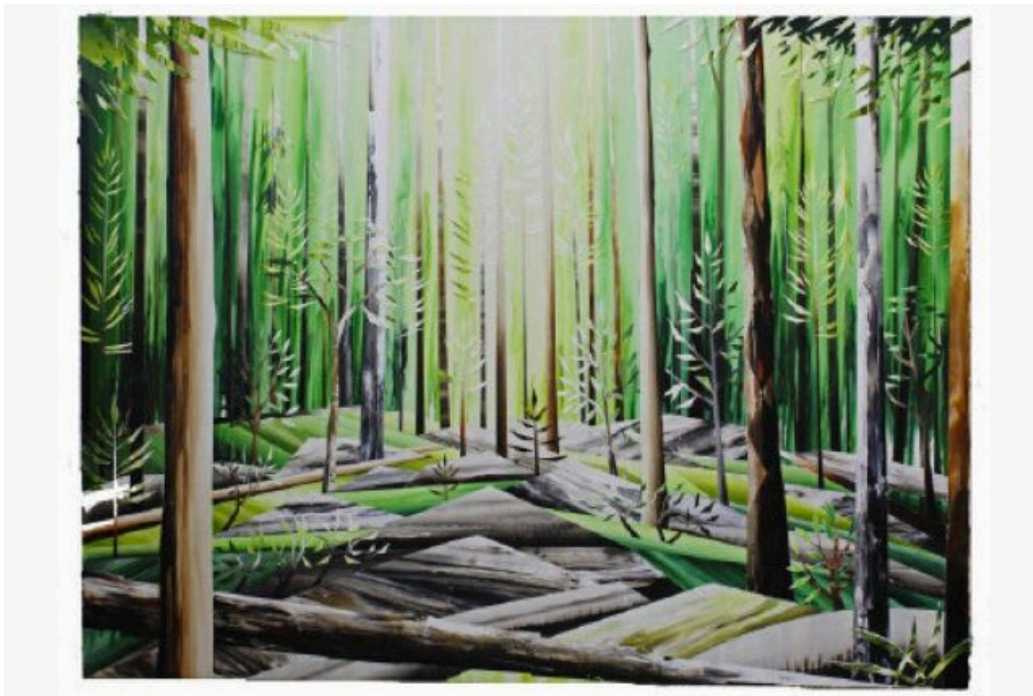
VISUAL ARTS

On the wall: What's in the galleries this week

Gavin Lynch's landscapes, Brian Groombridge's conceptualism and some of the best at Daniel Faria and Clint Roenisch

By: [Murray Whyte](#) Visual arts, Published on Sat Feb 20 2016

Ongoing



Gavin Lynch, *The Prelude & The Recluse*: Gavin Lynch is among a cohort of young painters looking to reimagine the convention of landscape. At Angell Gallery, his canvases — big, for the most part — have an intensely flat plane, which Lynch layers with a self-consciously geometric precision. There is a persistent sense of virtuality here, perhaps a nod to the detached experience of nature many of us now have, wed as we are to our various devices. But Lynch's pictures are by no means didactic and his own background tells some of the tale: growing up in Burns Lake, a remote logging community in British Columbia, he saw enough indifference to nature to fuel an entire career, which might help explain the detached view.

- At [Angell Gallery](#), 1444 Dupont, Unit 15, until Feb. 27.